



## **ANEW Renewed: Inclusive Art Vermont’s Visual Art Exhibit, ANEW, featuring the art of 29 Vermont artists with disabilities, is heading to the T. W. Wood Gallery in Montpelier.**

After being sidelined by the pandemic, artists and the public will be able to experience the ANEW exhibition on Vermont gallery walls once again. Inclusive Arts Vermont and T. W. Wood Gallery present ANEW, a traveling exhibition of work by 29 Vermont artists with disabilities. The included artwork represents each artist’s unique interpretation of the title - highlighting beginnings, doorways, fresh starts, and opportunity. The exhibition features established and emerging artists who create in a variety of mediums: sculpture, photography, multimedia, painting, collage, textile and more.

[Artist Karen J. Lloyd](#) reflects on the impact of the exhibition on her art and her understanding of self:

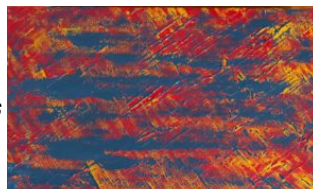
***“The ANEW theme inspired me to reflect on how my artwork symbolically connects with my life, as an artist but also as someone with chronic health issues. This exhibit and my photograph ‘After the Storm’ opened the door for me to more deeply explore how challenges (and overcoming or thriving despite them) can lead to unexpected, beautiful creation. It has been incredibly validating and inspiring to be part of this artistic community where I feel welcome to come as I am: the sense that I am ‘enough’ even if I am weathering storms of limiting illness, and that if anything those aspects add to my voice as an artist.”***



The pandemic halted intended travel for the tour, relegating the artwork to boxes in Inclusive Arts Vermont’s Essex offices. This fall, the exhibit got a new life, hanging on the walls of the Dartmouth Hitchcock Medical Center, where 300 people a day encountered the artwork. And now, [T. W. Wood Gallery will offer a home](#) to these 29 unique and powerful art pieces from May 6 through June 25, 2021.

[Artist Jean Cherouny](#) shares how the exhibition supported her and her creativity during the pandemic:

***“There is an art to making what we love and need to share. Being represented in the ANEW artists brings me joy. This exhibition is more than a mere expression: it is creatina community and***



*connection. Isolation and challenge increased during this time, but this exhibition created an ongoing dialogue about process and creativity and embracing our true creative selves as we pushed together through isolation.”*



To increase access during the pandemic, the exhibit moved online in a digital tour format, including verbal descriptions of all pieces in the exhibition. Additionally, Inclusive Arts Vermont hosts monthly virtual artist talks with artists from the ANEW exhibit, exploring creativity, artistic process, disability, and identity. These talks built creative community across broadband during a time of social and creative isolation. Talks are scheduled through June and take place on the second Wednesday of the month. Upcoming featured artists are Karen Lloyd (April), Gyllian Rae Svensson (May), and Willow Bascom (June). For the virtual tour and archives of past artists talks, visit <https://www.inclusiveartsvermont.org/community/exhibitions/>.

To keep everyone as safe as possible, the T. W. Wood Gallery is open by appointment only. Sign up for your free visit through [T. W. Wood's Eventbrite site](#). Or, email [info@twoodgallery.org](mailto:info@twoodgallery.org) or call (802) 262-6035.

#### **Gallery Information:**

The T. W. Wood Gallery  
Center for Arts and Learning  
46 Barre Street  
Montpelier, VT 05602  
<https://www.twoodgallery.org/>

To learn more about Inclusive Arts Vermont and its programs, visit [www.inclusiveartsvermont.org](http://www.inclusiveartsvermont.org), email [info@inclusiveartsvermont.org](mailto:info@inclusiveartsvermont.org), or call (802) 871-5002.

This exhibit was made possible with support from the Vermont Community Foundation Arts Endowment Fund and the Vermont Arts Council.

---

[Thank you for your continued support!](#)

The mission of Inclusive Arts Vermont is to use the magic of the arts to engage the capabilities and enhance the confidence of children and adults with disabilities. We do this through education, exhibition, and capacity building programs for teachers, students, artists, and organizations.

---

[Click to view this email in a browser](#)

If you no longer wish to receive these emails, please reply to this message with "Unsubscribe" in the subject line or simply click on the following link: [Unsubscribe](#)

---

Inclusive Arts Vermont  
21 Carmichael Street, Suite 206  
Essex Junction, Vermont 05452  
US

[Read](#) the VerticalResponse marketing policy.

**vertical** DELIVERED BY  
**response**  
Try It Free Today!